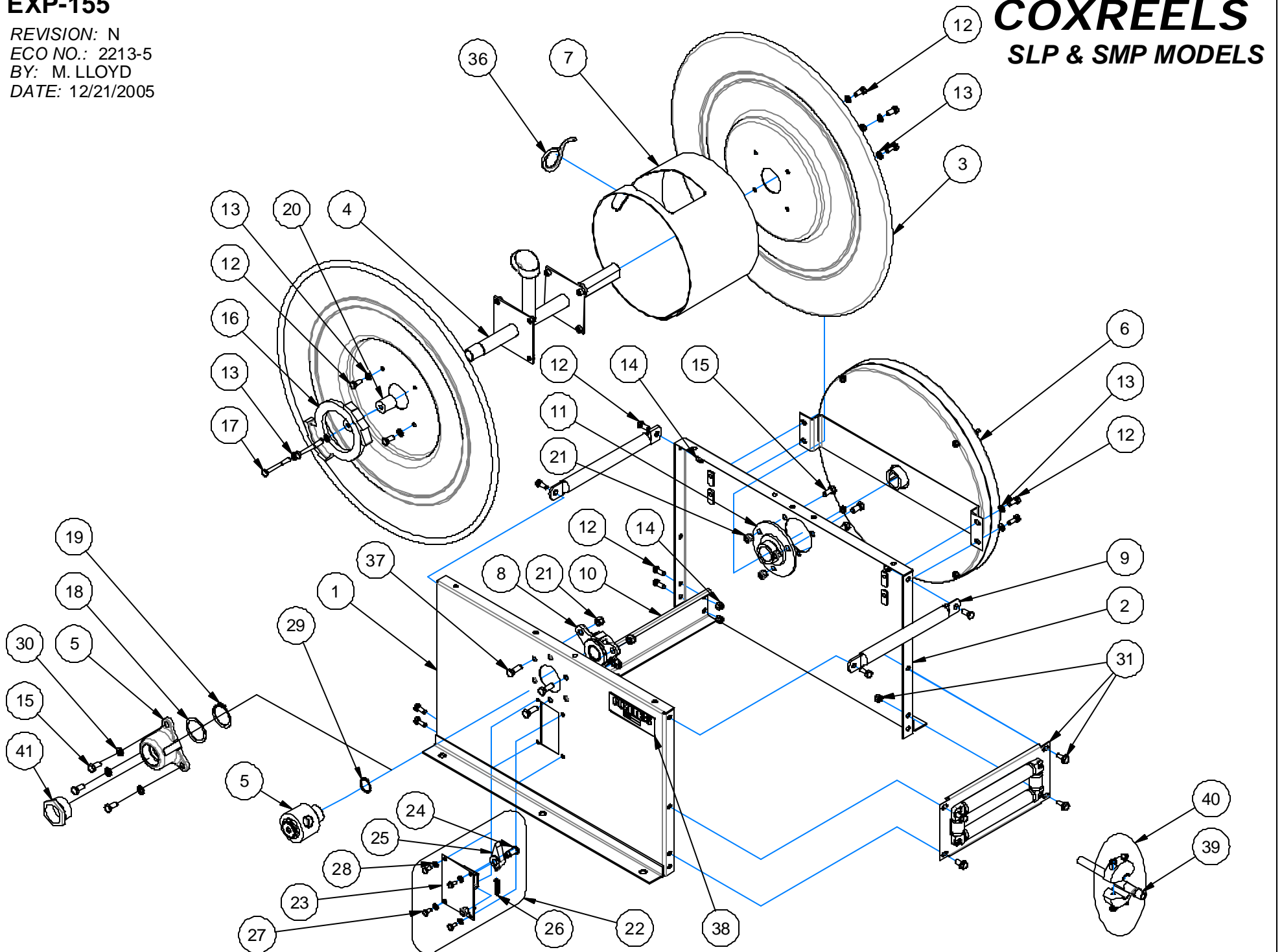


# EXP-155

REVISION: N  
ECO NO.: 2213-5  
BY: M. LLOYD  
DATE: 12/21/2005

# COXREELS

SLP & SMP MODELS



COMMON PARTS TO ALL SERIES SLP,SMP SERIES REELS

ITEM NO.	PART NO.	DESCRIPTION	QTY REQ'D
11	20300	ASSEMBLY, BEARING	1
12	312	BOLT, 5/16-18 X 3/4" LG	18
13	112	WASHER, LOCK, 5/16"	12
14	111	NUT, LOCK, 5/16-18	8
16	20194	RING, LOCKING	1
17	10218	BOLT, 5/16-18 X 2-1/2" LG	2
20	20780	SPACER	2
21	435	NUT, LOCK, 3/8-16	7
22	20000	ASSY, LOCKING BRACKET	1

ITEM NO.	PART NO.	DESCRIPTION	QTY REQ'D
23	639	BRACKET, LOCKING	1
24	1620	BOLT, SHOULDER	1
25	640	CAM, LOCKING	1
26	20019	SPRING, TENSION	1
27	113	BOLT, 1/4-20 X 1/2"	4
28	114	WASHER, LOCK, 1/2"	4
36	7460-14	TRIM, DRUM EDGE	1
37	20016	BOLT, 3/8-16 X 1"	3
38	10925-5	NAMEPLATE, PRODUCT	1

ITEM NUMBER

MODEL NO.	1	2	3	4 **	5 **	6	7	8 **	9	10	15	18	19	29**	30	31	39 *	39 *	40 *	41
	PANEL	PANEL	DISC (2)	PLUMBING	SWIVEL	SPRING	DRUM	BEARING	BAR (2)	RAIL	BOLT (3)	WASHER	R. RING	R. RING	WSHR (3)	R. BRKT	STD HOSE	FUEL HOSE	B. STOP	REDUCER
SLP-4100	20224	20222	7799	7811	439	15240	7800-7.5	20276	20244-7.5	20385-7.5	436	-	-	153	-	8100-7.5	5154-100	-	131-4	-
SLP-550	20224	20222	7799	7812	426	20462	7800-7.5	20277	20244-7.5	20385-7.5	436	-	-	15015	-	8100-7.5	5155-50	5097-50	430	-
SLP-575	20230	20228	7603-1	7812	426	15243	7800-7.5	20277	20244-7.5	20385-7.5	436	-	-	15015	-	8100-7.5	5155-75	5097-75	430	-
SLP-5100	20230	20228	7603-1	7812	426	15233	7800-7.5	20277	20244-7.5	20385-7.5	436	-	-	15015	-	8100-7.5	5155-100	5097-100	430	-
SLP-625	20224	20222	7799	7813	15257-1	20429	7816-7.5	20996	20244-7.5	20385-7.5	436	-	-	15012	-	8101-7.5	5096-25	5092-25	20214	-
SLP-650	20230	20228	7603-1	7813	15257-1	20428	7816-7.5	20996	20244-7.5	20385-7.5	436	-	-	15012	-	8101-7.5	5096-50	5092-50	20214	-
SLP-675	20236	20234	7627-1	7813	15257-1	15236	7816-7.5	20996	20244-7.5	20385-7.5	436	-	-	15012	-	8101-7.5	5096-75	5092-75	20214	-
SLP-750	20236	20234	7627-1	7814	20288	20431	7816-7.5	20281	20244-7.5	20385-7.5	436***	20264	20266	-	437	8101-7.5	5098-1-50	-	20215	1578
SLP-850	20236	20234	7627-1	7814-1	20288	20468	7816-9.5	20281	20244-9.5	20385-9.5	436***	20264	20266	-	437	8101-9.5	5099-1-50	-	20216	-
SLPL-725	20230	20228	7603-1	7814	20288	20429	7816-7.5	20281	20244-7.5	20385-7.5	436***	20264	20266	-	437	8101-7.5	-	-	-	-
SLPL-825	20230	20228	7603-1	7814	20288	15244	7816-7.5	20281	20244-7.5	20385-7.5	436***	20264	20266	-	437	8101-7.5	-	-	-	-
SLPL-835	20236	20234	7627-1	7814	20288	15244	7816-7.5	20281	20244-7.5	20385-7.5	436***	20264	20266	-	437	8101-7.5	-	-	-	-

MODEL NO.	1	2	3	4	5	6	7	8	9	10	15	18	19	29	30	31	39	39	40	-
	PANEL	PANEL	DISC	PLUMBING	SWIVEL	SPRING	DRUM	BEARING	BAR	RAIL	BOLT	WASHER	R. RING	R. RING	WASHER	R. BRKT	STD HOSE	FUEL HOSE	B. STOP	-
SMP-4100	20224	20222	7799	7811	439	15237	7800-7.5	20276	20244-7.5	20385-7.5	436	-	-	153	-	8100-7.5	5256-100	-	131-4	-
SMP-550	20224	20222	7799	7812	426	20428	7800-7.5	20277	20244-7.5	20385-7.5	436	-	-	15015	-	8100-7.5	5290-50	-	430	-
SMP-575	20230	20228	7603-1	7812	426	15236	7800-7.5	20277	20244-7.5	20385-7.5	436	-	-	15015	-	8100-7.5	5290-75	-	430	-
SMP-5100	20230	20228	7603-1	7812	426	15233	7800-7.5	20277	20244-7.5	20385-7.5	436	-	-	15015	-	8100-7.5	5290-100	-	430	-
SMPL-625	20224	20222	7799	7813	15257-1	15234	7816-7.5	20996	20244-7.5	20385-7.5	436	-	-	15012	-	8101-7.5	-	-	-	-
SMPL-650	20230	20228	7603-1	7813	15257-1	20431	7816-7.5	20996	20244-7.5	20385-7.5	436	-	-	15012	-	8101-7.5	-	-	-	-
SMPL-675	20236	20234	7627-1	7813	15257-1	15236	7816-7.5	20996	20244-7.5	20385-7.5	436	-	-	15012	-	8101-7.5	-	-	-	-

\* ON "LESS HOSE" MODELS (SLPL-/SMPL-) EXCLUDE ITEMS #39, AND #40.

NOTE: MODELS SUPPLIED WITH "FUEL" HOSE (SLPF-) USE ITEM #39 HOSE NUMBERS AS NOTED ABOVE.

\*\* WHEN USING OPTION (-BUX) FOR EXTERNAL SWIVEL ON SLPL-725 THRU SLPL-850, SUBSTITUTE THE FOLLOWING ITEMS.

- ITEM #4 PLUMBING #7815 (SLPI-725 THRU SLPL-835) OR 7815-1 (SLPL-850)
- ITEM #5 SWIVEL #20253-1
- ITEM #8 BEARING #20257
- ITEM #29 R. RING #20252

\*\*\* MODELS WITH THE 20288 REQUIRE 6 X 436 BOLTS.