

EXP-60SS.DWG

REVISION: T

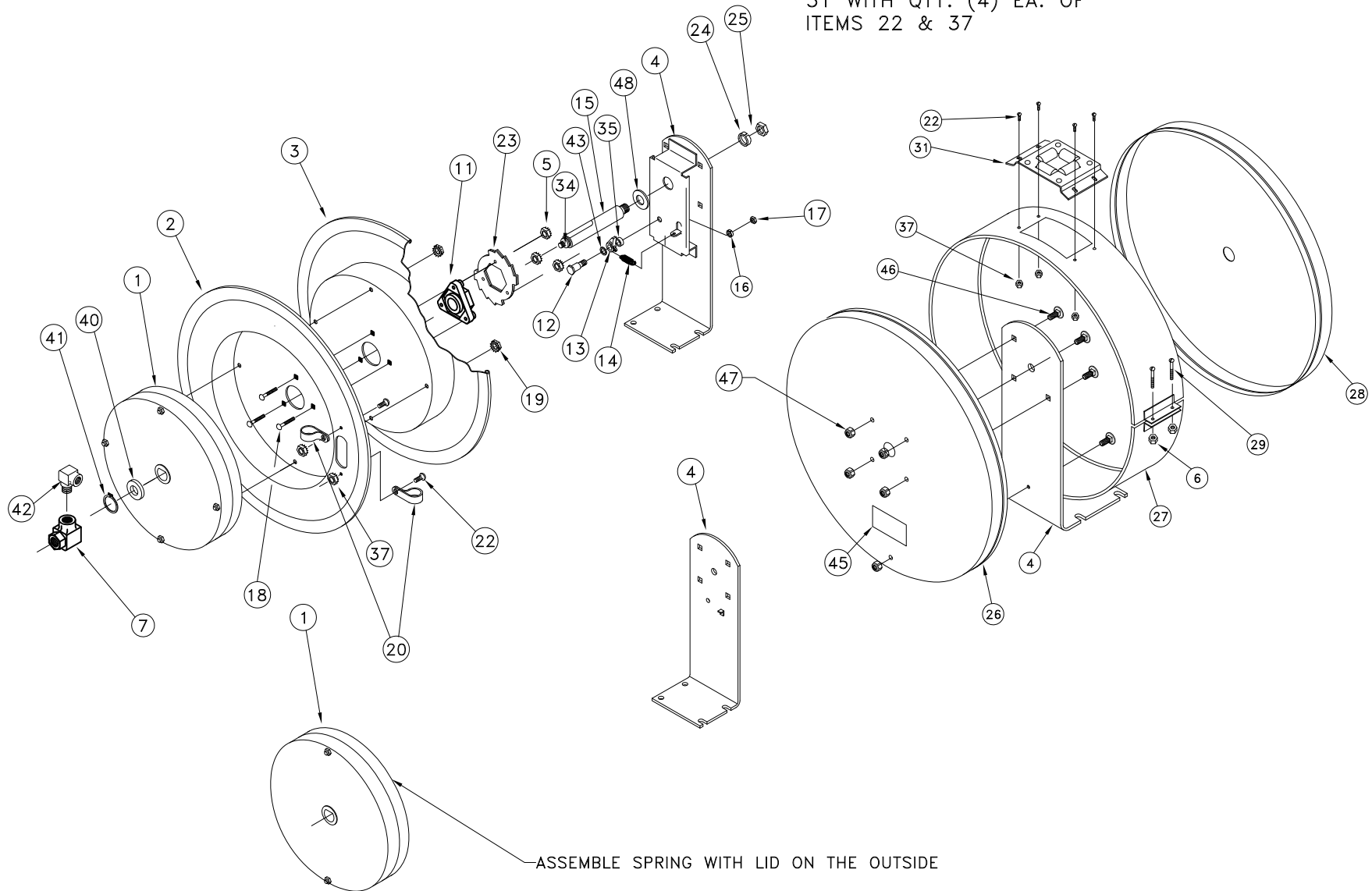
ECO NO.: 2983-02

DRAWN BY: J. KNOSALLA

DATE: 10/23/13

COXREELS
SERIES EN
STAINLESS STEEL

④ CENTER BAND KIT WITH HOSE
GUIDE INCLUDES ITEMS 27 &
31 WITH QTY. (4) EA. OF
ITEMS 22 & 37



COMMON PARTS TO ALL SERIES EN
STAINLESS STEEL REELS

| DETAIL ITEM NO. | PART NO. | DESCRIPTION | ENL-N-335-SS | ENL-N-350-SS | ENL-N-425-SS | ENL-N-450-SS | ENML-N-335-SS | ENML-N-350-SS | ENML-N-425-SS | ENML-N-450-SS |
|-----------------|-------------|--|--------------|--------------|--------------|--------------|---------------|---------------|---------------|---------------|
| 1 | 689-3-SP | SPRING CAN, 10", SS | 1 | * | * | * | * | * | * | * |
| | 690-2-SP | SPRING CAN, 12", SS | * | 1 | * | * | * | * | * | * |
| | 691-3-SP | SPRING CAN, 12", SS | * | * | * | 1 | * | * | * | * |
| | 2037-3-SP | SPRING CAN, 10", SS | * | * | 1 | * | * | * | 1 | * |
| | 2037-1-SP | SPRING CAN, 10", SS | * | * | * | * | 1 | * | * | * |
| | 646-SP | SPRING CAN, 12", SS | * | * | * | * | * | 1 | * | * |
| | 696-1-SP | SPRING CAN, 12", SS | * | * | * | * | * | * | * | 1 |
| 2 | 1948-SP | DISC, 17" X 2.88"W., W/SLOT, SS | 1 | * | 1 | * | 1 | * | 1 | * |
| | 1703-SP | DISC, 19-1/2" X 2.25"W., W/SLOT, SS | * | 1 | * | 1 | * | 1 | * | 1 |
| 3 | 1947-SP | DISC, 17" X 2.88"W., SS | 1 | * | 1 | * | 1 | * | 1 | * |
| | 1702-SP | DISC, 19-1/2" X 2.25"W., SS | * | 1 | * | 1 | * | 1 | * | 1 |
| 4 | 1970-1-SP | BASE, SS, EN-REEL | 1 | * | 1 | * | 1 | * | 1 | * |
| | 1743-3-SP | BASE, SS, 19" EN-REEL | * | 1 | * | 1 | * | 1 | * | 1 |
| 5 | 1777-SS | NUT, FLEX-LOCK, 1/4-20, SS | 3 | 3 | 3 | 3 | 3 | 3 | 3 | 3 |
| 6 | 3859-SS | NUT, LOCK/STOP, 1/4-20, SS | 2 | 2 | 2 | 2 | 2 | 2 | 2 | 2 |
| 7 | 433-SS | SWIVEL, 3/8" NPT, CARBOXYLATED, SS | 1 | 1 | * | * | 1 | 1 | * | * |
| | 434-SS | SWIVEL, 1/2" NPT, CARBOXYLATED, SS | * | * | 1 | 1 | * | * | 1 | 1 |
| 11 | 1776-5 | BEARING, HUB, 1" ID | 1 | 1 | 1 | 1 | 1 | 1 | 1 | 1 |
| 12 | 1620-SS | BOLT, SHOULDER, 1/2" X 1-1/2", SS | 1 | 1 | 1 | 1 | 1 | 1 | 1 | 1 |
| 13 | 640-1-SS | LOCKING DOG, F7 REEL, SS | 1 | 1 | 1 | 1 | 1 | 1 | 1 | 1 |
| 14 | 274-1-SS | SPRING, TENSION, LOCKING DOG | 1 | 1 | 1 | 1 | 1 | 1 | 1 | 1 |
| 15 | 1956-SS | AXLE, 1" OD, 1" SPRING CAN, SS | 1 | * | 1 | * | 1 | * | 1 | * |
| | 1793-SS | AXLE, 1" OD, 1" SPRING CAN, SS | * | 1 | * | 1 | * | 1 | * | * |
| | 1794-SS | AXLE, 1" OD, 1-1/2" SPRING CAN, SS | * | * | * | * | * | * | * | 1 |
| 16 | 437-SS | WASHER, LOCK, 3/8" | * | 1 | * | 1 | * | 1 | * | 1 |
| 17 | 435-SS | NUT, LOCK, 3/8-16, .437" W, SS NYLON ELEMENT | 1 | 1 | 1 | 1 | 1 | 1 | 1 | 1 |
| 18 | 1953-SS | BOLT, CARRIAGE, 1/4-20 X 1-1/2", GR 5, SS | 3 | 3 | 3 | 3 | 3 | 3 | 3 | 3 |
| 19 | 7050-SS | NUT, LOCK, SS, 10-32 | 2 | * | 2 | * | 2 | * | 2 | * |
| | 1777-SS | NUT, FLEX-LOCK, 1/4-20, SS | * | 4 | * | 4 | * | 4 | * | 4 |
| 20 | 381-SS | CLAMP, HOSE, #10, SS | 2 | 2 | * | * | 2 | 2 | * | * |
| | 382-SS | CLAMP, HOSE, #14, SS | * | * | 2 | 2 | * | * | 2 | 2 |
| 22 | 245-SS | SCREW, 10-32 X 3/8, TRUSS/PHP, SS | 6 | 6 | 6 | 6 | 6 | 6 | 6 | 6 |
| 23 | 1924-SS | LOCKING RING, SS, F7 REEL | 1 | 1 | 1 | 1 | 1 | 1 | 1 | 1 |
| 24 | 438-SS | WASHER, LOCK, 5/8", SS | 1 | 1 | 1 | 1 | 1 | 1 | 1 | 1 |
| 25 | 3584-SS | NUT, HEX, 5/8-11, SS | 1 | 1 | 1 | 1 | 1 | 1 | 1 | 1 |
| 26 | 1967-SS | COVER, END, W/CUTOUT, SS, 17" EN REEL | 1 | * | 1 | * | 1 | * | 1 | * |
| | 195-1-SS | COVER, END, W/CUTOUT, SS, 19" EN REEL | * | 1 | * | 1 | * | 1 | * | 1 |
| 27 | 1966-2-SS | CENTER BAND, SS, 17" EN REEL | 1 | * | 1 | * | 1 | * | 1 | * |
| | 529-1-SS | CENTER BAND, SS, 19" EN REEL | * | 1 | * | 1 | * | 1 | * | 1 |
| 28 | 1968-SS | COVER, END, SS, 17" EN REEL | 1 | * | 1 | * | 1 | * | 1 | * |
| | 196-1-SS | COVER, END, SS, 19" EN REEL | * | 1 | * | 1 | * | 1 | * | 1 |
| 29 | 132-SS | SCREW, TRUSS HD, SS, 1/4-20 X 1-1/2 | 2 | 2 | 2 | 2 | 2 | 2 | 2 | 2 |
| 31 | 324-1-SS | ROLLER BRACKET, EN-REEL, SS | 1 | 1 | 1 | 1 | 1 | 1 | 1 | 1 |
| 34 | 10235-SS | STUD, SS, 3/8-16 UNC-2A X 1 | 1 | 1 | 1 | 1 | 1 | 1 | 1 | 1 |
| 35 | 6440-SS | SPACER, WASHER, .286"W., SS | 1 | 1 | 1 | 1 | 1 | 1 | 1 | 1 |
| 37 | 7050-SS | NUT, LOCK, SS, 10-32 | 6 | 6 | 6 | 6 | 6 | 6 | 6 | 6 |
| 40 | 1755-1 | WASHER, SPACER, HDPE, BLACK | 1 | 1 | 1 | 1 | 1 | 1 | 1 | 1 |
| 41 | 1753-SS | RETAINING RING, SS (5160-75H) | 1 | 1 | 1 | 1 | 1 | 1 | 1 | 1 |
| 42 | 500-SS | ELBOW, STR, 90DEG, 3/8", SS | * | * | * | * | 1 | * | * | * |
| | 1671-SS | ELBOW, STR, 90DEG, 1/2", SS | * | * | * | * | * | * | 1 | * |
| 43 | 6441-1 | SPACER, WASHER, .050"W. | 1 | 1 | 1 | 1 | 1 | 1 | 1 | 1 |
| *44 | 2209-1 | KIT, CENTER BAND, W/ HOSE GUIDE | 1 | * | 1 | * | 1 | * | 1 | * |
| | 2209-2 | KIT, CENTER BAND, W/ HOSE GUIDE 19" | * | 1 | * | 1 | * | 1 | * | 1 |
| 45 | 10925-5 | NAMEPLATE, PRODUCT, STD DECAL | 1 | 1 | 1 | 1 | 1 | 1 | 1 | 1 |
| 46 | 10220-75-SS | BOLT, CARRIAGE, 5/16-18 X 3/4", GR 5, SS | 5 | 5 | 5 | 5 | 5 | 5 | 5 | 5 |
| 47 | 111-SS | NUT, LOCK, 5/16-18, SS | 5 | 5 | 5 | 5 | 5 | 5 | 5 | 5 |
| 48 | 7219-SS | WASHER, SPACER SS | 1 | * | 1 | * | 1 | * | 1 | * |

*NOTE: ITEM 44 BAND KIT IS FOR PARTS ORDERS ONLY

REEL ASSEMBLY REPORTS: R100 (LATCHOUT REMOVAL), R101 (LOCKING RING PLACEMENT), R112 (TIGHTENING AND TORQUE), R127 (CENTER BAND TIGHTEN)

REVISION: T

ECO: 2983-02 DATE: 10/23/2013

NAME: J. KNOSALLA